

SD-WAN

A Smarter Network



Rapid growth in enterprise traffic and cloud-based applications, and an increasingly distributed workforce, are significantly impacting the enterprise WAN. GTT's SD-WAN provides the agility, flexibility and scalability to transform these challenges into opportunities. Take advantage of enhanced global connectivity; optimized network availability and performance; and secure, end-to-end access to the applications that drive productivity and growth across your organization.

Global Connectivity, Optimal Performance



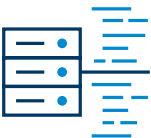
Comprehensive Access Options

GTT's SD-WAN provides the widest range of access options, making it simple and cost-effective to integrate new locations and add network bandwidth as needed. We provide redundant broadband circuits (EoC, DSL or cable), network-based firewall, and a managed SD-WAN device for a single monthly price. We also offer 3G/4G wireless connectivity and Ethernet over fiber for higher speed requirements.



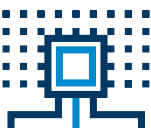
Expansive Reach

Take advantage of our global Tier 1 IP backbone, which securely transports client traffic between locations to any destination on the internet or to any of our privately interconnected cloud service providers around the world. Our SD-WAN offering is available worldwide, with a range of access options per country.



Enhanced Application Performance and Visibility

Our client portal allows you to set business policies for network traffic based on your unique requirements. SD-WAN will route your application traffic over the best available WAN link in real time, enabling you to prioritize mission-critical and latency-sensitive applications, such as voice and video. The portal also provides full visibility into performance and bandwidth usage by application, location and user.



Improved Network Availability

SD-WAN leverages multiple internet access solutions to enhance network availability across diverse locations. 3G/4G wireless-based internet access can also be incorporated for network backup or to quickly connect new or temporary locations.

Comprehensive Capabilities, Simplified Networking

Secure Your Data

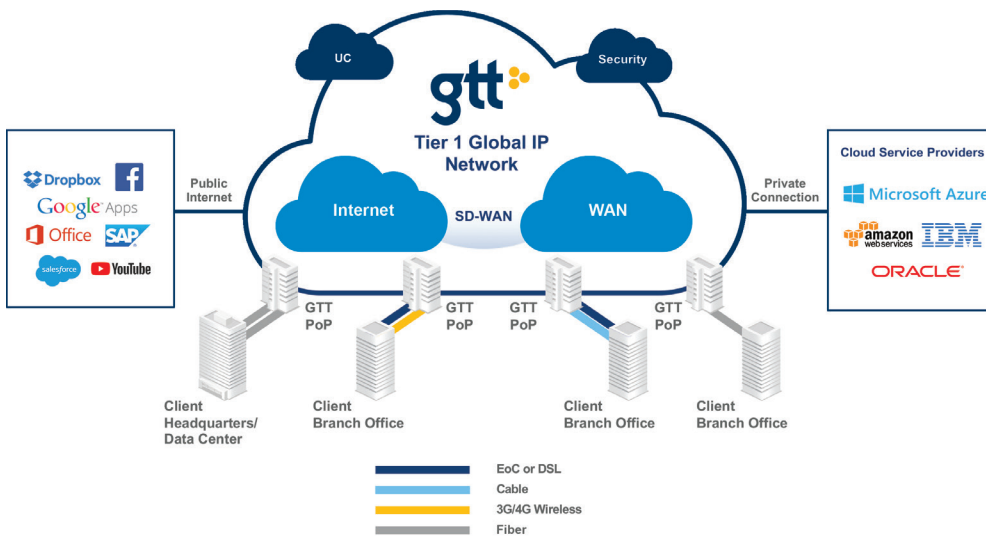
GTT's SD-WAN secures all traffic using end-to-end encryption. Integrated, network-based firewall capabilities ensure the secure separation of traffic, such as guest Wi-Fi within your network. Provide additional security for your internet-bound traffic and SaaS applications with our optional advanced network-based security services, including web content filtering and DDoS Mitigation.

Proven Managed Services Expertise

Combine the benefits of networking, application performance management and security into one seamless managed service experience with SD-WAN. Our technical experts will design, implement, install and optimize the service. Take advantage of 24/7 continuous, proactive, end-to-end monitoring by our NOC. Be confident in our unparalleled experience as an established managed services provider with over 100,000 endpoints under management.

Advanced Networking Made Simple

Multiple SD-WAN gateways hosted in the GTT core network manage internet, cloud-destined and private WAN traffic across your network. GTT's Tier 1 internet network ensures efficient access to any SaaS application. We also support private connectivity to cloud service providers.



Key Features

Broadest access footprint

- EoC
- DSL
- Cable
- 3G/4G wireless
- Ethernet over fiber

Global reach

- Leverages GTT's leading Tier 1 IP backbone
- Integrated, secure connectivity between GTT's core network and the internet via our on-net SD-WAN gateways

Private, secure connectivity to leading cloud service providers

- Microsoft Azure, Amazon Web Services, IBM and Oracle

Increased performance and efficiency

- Route applications to the best available path
- Utilize all available bandwidth

Complete visibility through our client portal

- Insight into performance and comprehensive analytics
- Manage business and security policies

Contact Us

For more information, contact the GTT Channel Team at:
moreinfo@gtt.net

